



Wanuskewin

TOUR PLANNING GUIDE

2025



Wanuskewin

WHY BOOK CULTURAL PROGRAMMING?

Explore the opimihāw Valley and its more than 6,400 years of history and culture through year-round guided tours. Your group will have the opportunity to connect with our experienced interpretive guides to further your understanding of Indigenous cultures, ways of knowing, and worldviews. Perfect for all ages and demographics, our tours provide an immersive opportunity to interact with Northern Plains Indigenous cultures.

GUIDED TOUR / CULTURAL PROGRAM INFORMATION

- Cultural programs are all in person guided tours with one of our interpretive guides
- Tours can run in the morning or afternoon, or multiple times throughout the day
- The participant limit is 30 participants; larger groups will be split into and charged for multiple groups
- A guide will go to your room about 5 minutes before the start time to bring you to your programming space and/or split the group up if you have multiple groups doing tours.

Pricing

Guided tours are \$175/group per program. Groups larger than 30 people will be split into and charged as multiple groups, and programs will be run simultaneously so the groups can participate in different programs at the same time (please note that this option is subject to guide availability). For example, a group of 60 people would be split up into and charged for two groups, or \$350 in total.

The cost of the tour will be added to your event invoice.

Prices are subject to change.

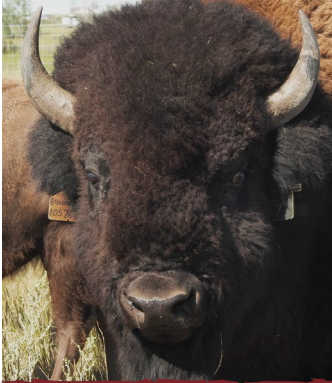


PROGRAMMING - GUIDED WALKS



30 - 60 Minutes

Explore the beauty and diversity of the opimihāw Valley with one of our guides. Learn more about Wanuskewin's archaeological efforts and the relationship between Indigenous people and the land.



Bison Walk

Outside

Learn about bison as a keystone species to the grassland ecosystem on our easiest and flattest guided walk. You will explore bison as a cultural and spiritual keystone to Northern Plains Indigenous peoples, the bison jump method of hunting through the nēwo asiniyak Bison Jump, and how the Wanuskewin bison herd is revitalizing Indigenous cultures and the grasslands.

Available year-round



Step Back in Time Walk

Outside

Get a glimpse of what daily life was like on the plains long ago and see the land from the perspective of Northern Plains Indigenous peoples as you walk the opimihāw Valley. With a focus on the bison jump and tipis, this program explores the interdependence between the people of the plains and the environment around them. This walk takes you along the easiest of our valley trails, but can be steep at the entrance and exits to the valley.

Available year-round



Native Plant Walk

Outside

Learn about the medicinal and edible plants in the opimihāw Valley that Indigenous peoples use for sustenance, shelter, and tools. We will explore the relationship between Indigenous peoples and the land, past and present plant use, and our role as stewards of the land we live on. Please note that participants will not sample or harvest any plants on this program.

Available May to August

Your patronage and partnership helps create pathways towards reconciliation and supports the critical cultural education work of our Indigenous-led non-profit.



PROGRAMMING – INTERACTIVE PROGRAMS



45-60 Minutes

Explore Indigenous ways of knowing through our hands-on learning programs. Your group will have the opportunity to learn about Northern Plains Indigenous cultures through experiential learning.



Tipi Teachings

Inside

Join us as we share the Plains Cree style tipi teachings gifted to Wanuskewin by Elder Mary Lee, and the life lessons that go along with each of these fifteen poles. You will learn more about the holistic nature of Plains Cree well-being and worldview through these women's teachings.

Available year-round



Traditional Games

Inside or Outside

In order to survive the challenging environment of the plains, children were taught survival skills through games. Your group will try their hand at playing some of these traditional games to practice the hunting, physical, and social skills that were essential to survive on the plains.

Available year-round

PROGRAMMING – VISITOR CENTRE PROGRAMS

30-60 Minutes

From tipis and archaeology, to intricate beading patterns and clothing, take a guided tour of our Visitor Centre's exhibits to learn more about Northern Plains Indigenous cultures.



Exhibits Tour

Inside

A guided tour of our exhibit spaces and our interactive displays. This tour features sections of the exhibits that touch on gifts from the land, language, clothing and regalia, archaeology, beading and trade, bison, and Treaty 6. This tour can also include a focus on the art galleries by request.

Available year-round

SELF-GUIDED OPTIONS



Whether you want to explore individually or as a group, Wanuskewin has lots to offer for self-guided options during your breaks.

- Exhibits - Explore our interactive permanent exhibit hall
- Galleries - Check out what's in the galleries on our website
- Gift Shop - Spend some time shopping for souvenirs or snacks
- Trail System - Walk our 7 km trail system to take in the nature and history of the site
- Tipi Village - Head down to our Tipi Village to explore our 18' tipis
- Bison Herd - Walk to our Viewing Platform for a chance to see our conservation herd

TRAIL RULES

In order to preserve this land for generations to come, we have a few rules for being on the trails:

1. Stay on the marked trails at all times.
2. Do not pick or harvest any plants, berries, or trees.
3. Do not disturb the wildlife. We are visiting their home, and we want to leave the valley the way we found it.
4. Do not litter.

TRAIL ACCESSIBILITY

Our trails are packed crusher dust to best preserve the opimihāw Valley. All trails are unpaved and the entrances to the valley are steep. The valley trails are not wheelchair accessible, and can be difficult for people with mobility limitations. The most accessible trail is the Bison Viewing Trail and the western Path of the People trail on the top of the valley past the playground.



Frequently Asked Questions



Do you do tours year-round? – Yes, we do guided tours year-round. Please note that the Native Plant Walk only runs from May to August to coincide with when the valley is in bloom.

Will the guide introduce themselves prior to the tour? – The guide(s) will go to your room about five minutes before the programming start time to introduce themselves and take you to the programming space. For tours with multiple groups, the Visitor Services Coordinator or a Senior Guide may meet with the organizer earlier in the day to discuss the tours.

What happens if the weather is poor? – Your programming will never be cancelled due to weather, but we may have to make some adjustments to accommodate poor weather. In the event of inclement weather like thunderstorms, snowstorms, icy conditions, poor air quality, or heat warnings, your programming will be moved inside when possible, or we will offer an alternative program instead. If we have advanced notice of poor weather, the Sales team let you know about any changes. If it is something that comes up on the day of your booking, the Visitor Services team will chat with the Sales team to come up with a poor weather alternative.

Who will be coming to the room to get the group? – The guide doing the tour or the Visitor Services Coordinator will come to the room to collect the group(s) shortly before your programming start time.

How will participants know which tour they are doing if we have multiple groups? – You are more than welcome to have participants pre-select their program(s) prior to arrival. If the participants do not pre-select their programs, or if the groups are doing the same programs, the Visitor Services Coordinator or a Senior Guide will split up the participants when they get to the room to collect the group(s) for their programming.

How accessible is Wanuskewin? – Our Visitor Centre is fully wheelchair accessible. Please talk to the Sales team for any specific questions regarding programming accessibility.

Is Wanuskewin a conservation site? – Wanuskewin works to preserve and conserve the ecological health of the opimihāw Valley through resource management and educational programming that emphasizes the importance of humans as stewards of the land we live on.

